



Petaluma **CHARMER**

4 Starling Drive, Petaluma
OFFERED AT \$1,289,000

5-BEDS, 3-BATHS, +/-2,878 SQ. FT. | +/- 6,500 SQ. FT. LOT

**Breathtaking Home, Private Backyard Oasis,
and the Perfect Location, this one has it all!**

Gorgeous is just one of the many compliments for this exceptional property that truly defines home. Welcome to 4 Staring Drive, offering 5 spacious bedrooms and 3 full baths, including a convenient bedroom and bath on the main level. At the heart of the home, the kitchen shines with stainless steel appliances, granite tile countertops, stone backsplash, and plenty of storage, all accented by beautiful designer décor. Outside, your backyard oasis awaits, complete with a gazebo, outdoor fireplace, and lush landscaping ideal for relaxing or entertaining. This home has been loved and it shows, come see why you'll fall in love too!

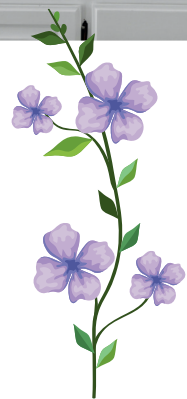
DENISE LUCCHESI | DRE#01465878
PH: 707-799-6948 - DENISE@CENTURY21EPIC.COM



LET ME EARN YOUR BUSINESS!

WWW.DENISELUCCHESI.COM

616 PETALUMA BLVD S, PETALUMA CA 94952



FEATURES

- 5-beds, 3-baths, +/-2,878 sq. ft. residence.
- A two story floor plan, with classic accents brings privacy, comfort, and convenience on a 6,500 sq. ft. lot nestled on a charming street, brimming with mature shade trees.
- Natural light fills every corner of this home.
- Picture windows and cozy carpet blend seamlessly throughout.
- Beautifully manicured landscaping front and back to complete your private oasis.
- Add in a three-car garage, four-car driveway, and gated RV and boat parking, and you have perfection.

Legendary Service

LET ME EARN YOUR BUSINESS!



DENISE LUCCHESI , DRE#01465878

PH: 707-799-6948 | DENISE@CENTURY21EPIC.COM | DENISELUCCHESI.COM